

**TO LET**

# FULLY REFURBISHED RETAIL UNITS

THE  
**PIAZZA**

**PAISLEY · PIAZZA CENTRE · PA1 1EL**





# TO LET

FULLY REFURBISHED  
RETAIL UNITS

# LOCATION

Paisley is Scotland's largest town with a population of 85,000 and a catchment of over 1 million within a 70 mile radius. The subjects occupy an excellent location within the town's premier retail destination, Piazza Shopping Centre.

The subject properties are located within the prime section of the mall whilst also being situated directly opposite Gilmour Street Station, the main train station for the town. Occupiers within the centre include New Look, Superdrug, Carphone Warehouse, Warren James, Costa Coffee and Card Factory.

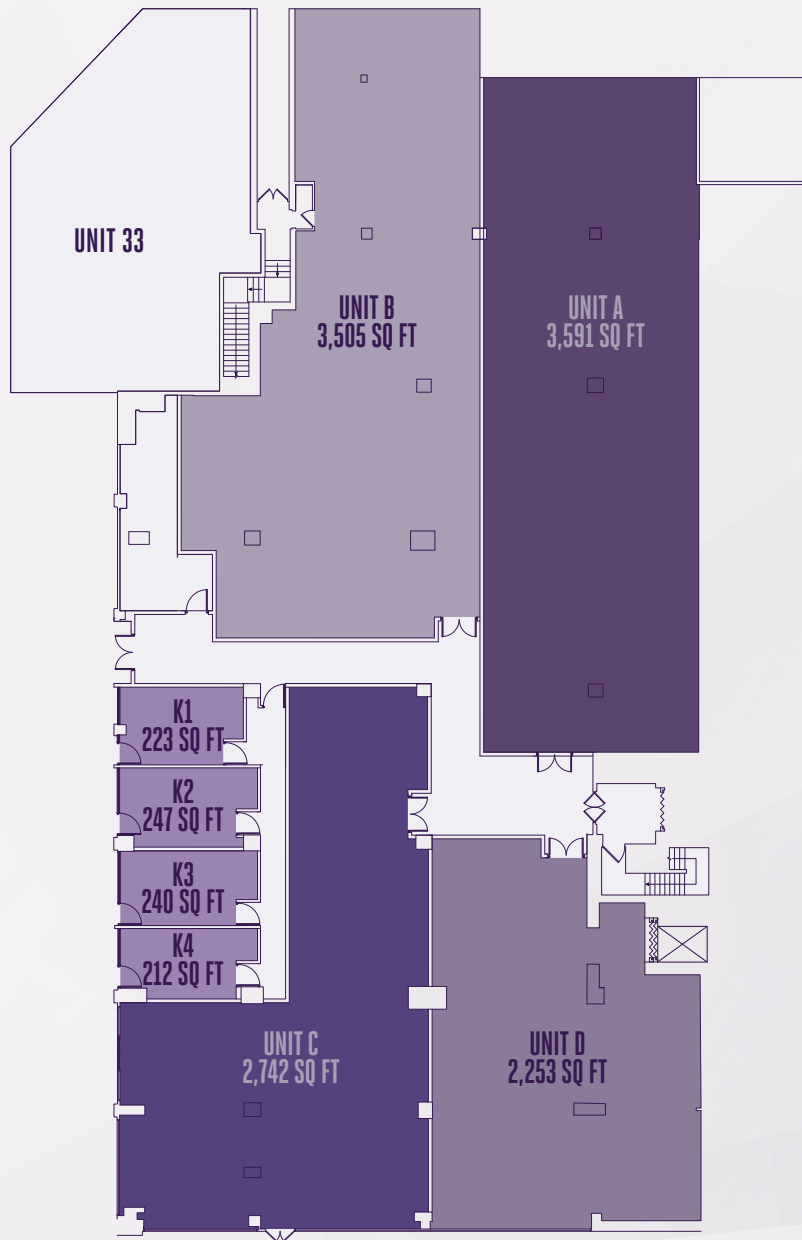


INDICATIVE CGI ONLY

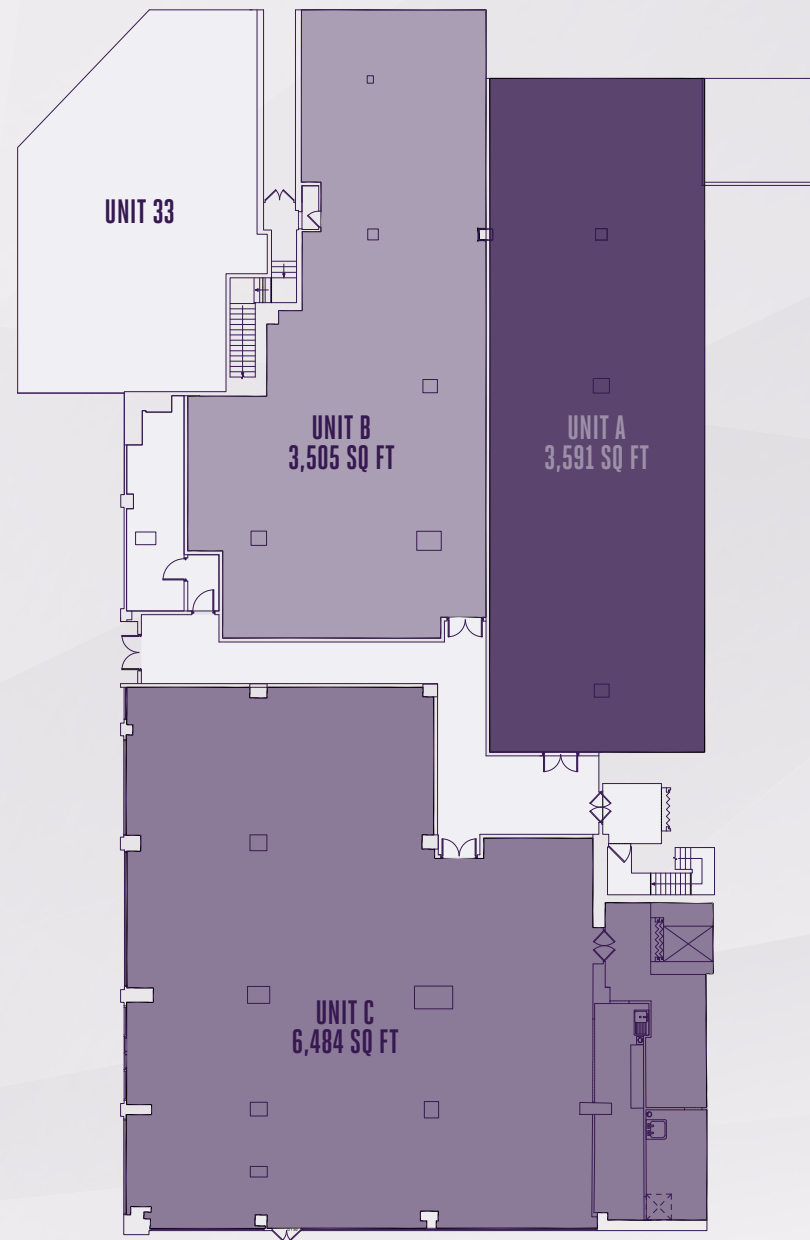
# ACCOMMODATION

Unit	Option 1 Layout	Option 2 Layout
A	3,591 sq ft (333.63 sq m)	3,591 sq ft (333.63 sq m)
B	3,505 sq ft (325.68 sq m)	3,505 sq ft (325.68 sq m)
C	2,742 sq ft (254.74 sq m)	6,484 sq ft (602.47 sq m)
D	2,253 sq ft (209.31 sq m)	

# OPTION 1



# OPTION 2



## TO LET

FULLY REFURBISHED  
RETAIL UNITS

## LEASE

The subjects are available on a new full repairing and insuring lease for a term to be agreed.

## RENT

On application.

## RATING

The units will be re-assessed following sub-division works.

## EPC

To be re-assessed following the sub-division works.



## DATE OF ENTRY

By arrangement.

## LEGAL COSTS

Each party to be responsible for their own legal costs incurred during the transaction. For the avoidance of doubt the ingoing tenant will be responsible for Land and Buildings Transaction Tax (LBTT), registration dues and any VAT payable thereon.

## VIEWING

All viewings are strictly by prior arrangement with Eric Young & Co.



Kevin Hughes  
0131 558 5142  
khughes@eyco.co.uk